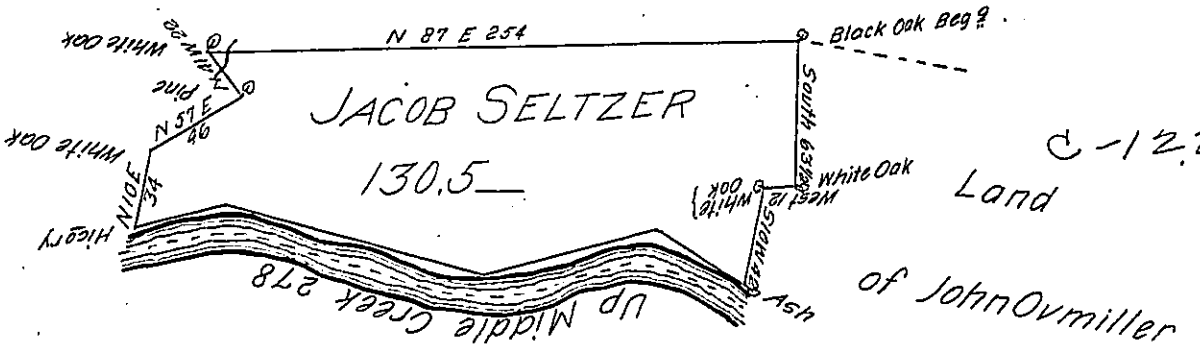


Courses & Distances.
up Middle Creek

N 62 W 46
S 74 W 78
N 76 W 114
S 74 W 40
278

By vacant Hills



A-35-296.

A-13-269

The Draught of a Tract of Land called _____ situate on Middle Creek in the County of Cumberland containing One Hundred thirty Acres and an Half Acre with the usual Allowance of Six Acres P Cent for Roads Survey'd the 30th day of October Anno Dom 1769 In Pursuance of an Order of Survey to Jacob Seltzer Bearing Date at Philad^a the 17th day of August Anno Dom 1769 N^o 5573

To John Lukens Esq S.G.
of Pennsylvania

P. W^m Macloy D.S

IN TESTIMONY that the above is a copy of the original remaining on file in the Department of Internal Affairs of Pennsylvania, made conformably to an Act of Assembly approved the 16th day of February, 1833, I have hereunto set my Hand and caused the Seal of said Department to be affixed at Harrisburg, this first day of August 1904

Isaac P. Brown
Secretary of Internal Affairs.